



## Level Measurement & Control Solutions

### LOSS OF HEAD INDICATOR-TRANSMITTER

#### 104- LOH

The 104 LOH is consisting of two probes & one loop powered transmitter for Loss of Head Measurement. It utilizes SBEM's proven capacitance probes with low power Microprocessor based Electronics. It is used for Differential-Head Loss measurement in Gravity Filter Beds. The supply of all the accessories for fitment at site like Stilling wells, Inlet equalizing valves, visible calibration tube and Mounting angles makes the fitment of the LOH indicator quick and easy for the user. No calibration is necessary, only Zero & Span needs to be programmed. .

#### APPLICATION:

Differential level Measurement( Loss Of Head) for Water In Filter Beds for Water Treatment Plants .

#### SPECIFICATIONS:

##### TRANSMITTER UNIT :

- o Enclosure : Weatherproof IP 65, Cast Aluminium polyurethane painted.
- o Display type : 6 Digit LCD Display.
- o Display Range : 0- 9999 mm with adjustable Decimal Point.(std.0-100%)
- o Calibration : Possible through front panel key Pad.
- o Accuracy :  $\pm 2\%$  of Electrode length.
- o Temperature : 60°C (Max.)
- o Pressure : Atmospheric.
- o Output Current : 4-20 mA DC proportional to Loss of Head .
- o Surge Protection : In Built.
- o Supply : 24 VDC  $\pm 10\%$
- o Mounting : Wall or Pipe mounting.
- o Cable entry :  $\frac{3}{4}$ " UNF(F) (2 No.).

##### PROBE UNIT:

- o Number of Electrodes : Two identical electrodes, one each for High & Low pressure.
- o Temperature : 60°C (Max.)
- o Pressure : Atmospheric.
- o Electrode Material : PTFE Wrapped SS cable
- o Outer pipe (Still well) : SS304
- o Maximum Length : 2700 mm (Std.) , 0-4000 mm (Optional).
- o Cable Entries :  $\frac{3}{4}$ " UNF(F).
- o Enclosure : Weatherproof IP65, Cast Aluminium polyurethane painted.
- o Cable between Probe and Indicator : 5 Core X 1.5 Sq.mm. shielded cable with Max.distance between probe and indicator 100Mtr.

##### ACCESSORIES :

- o Valves with Nipples : 5 Nos,  $\frac{1}{2}$ " ,Brass .
- o Indicating Tube : Suitable PVC tube.
- o Mounting bracket : CS angle.
- o Glands : PVC, PG11, Weatherproof



#### FEATURES :

- o Low cost solution.
- o 4-20 mA - Two wire transmitter.
- o No calibration at site except for Zero & span setting.
- o Arrangement for recalibration if required.
- o Alarm on Loss Of Head using Optional Indicator (96X96).
- o Quick and easy installation.
- o Self diagnostic function: Error messages on display.
- o SCALABLE USER FRIENDLY DISPLAY : 6 Digit LCD, easy to read, with adjustable Decimal point to give direct loss of head in mm or cm.
- o ACCURACY: The overall system accuracy is better than  $\pm 2\%$  of the Electrode Length.
- o PROTECTION: All entries are protected through Password in EEPROM.
- o Maintenance Free.
- o All accessories supplied.
- o Provision of a nozzle to clean the probe without dismantling the Probe.

#### NOTES:

1. Routine cleaning for Sensor, Nozzle is recommended to get consistent results.
2. Canopy for Transmitter is recommended & is in purchaser scope.
3. Optional Remote Indicator (96X96) suitable for Panel Mounting may be added with 2 Set Points for control purpose.
4. Interconnecting Cables from probe to transmitter should be 5 core x 1.5 sq.mm. Conductor multistranded, shielded cable of length 100 mtr max. Unarmored cable to be provided by purchaser.
5. 24  $\pm 0.5$  VDC, 30 mA, ripple < 100 mV Power supply to be

**ORDERING CODE:**

**104-LOH**  **4** **L=**

**Transmitter Mounting:**

**Still Well:**

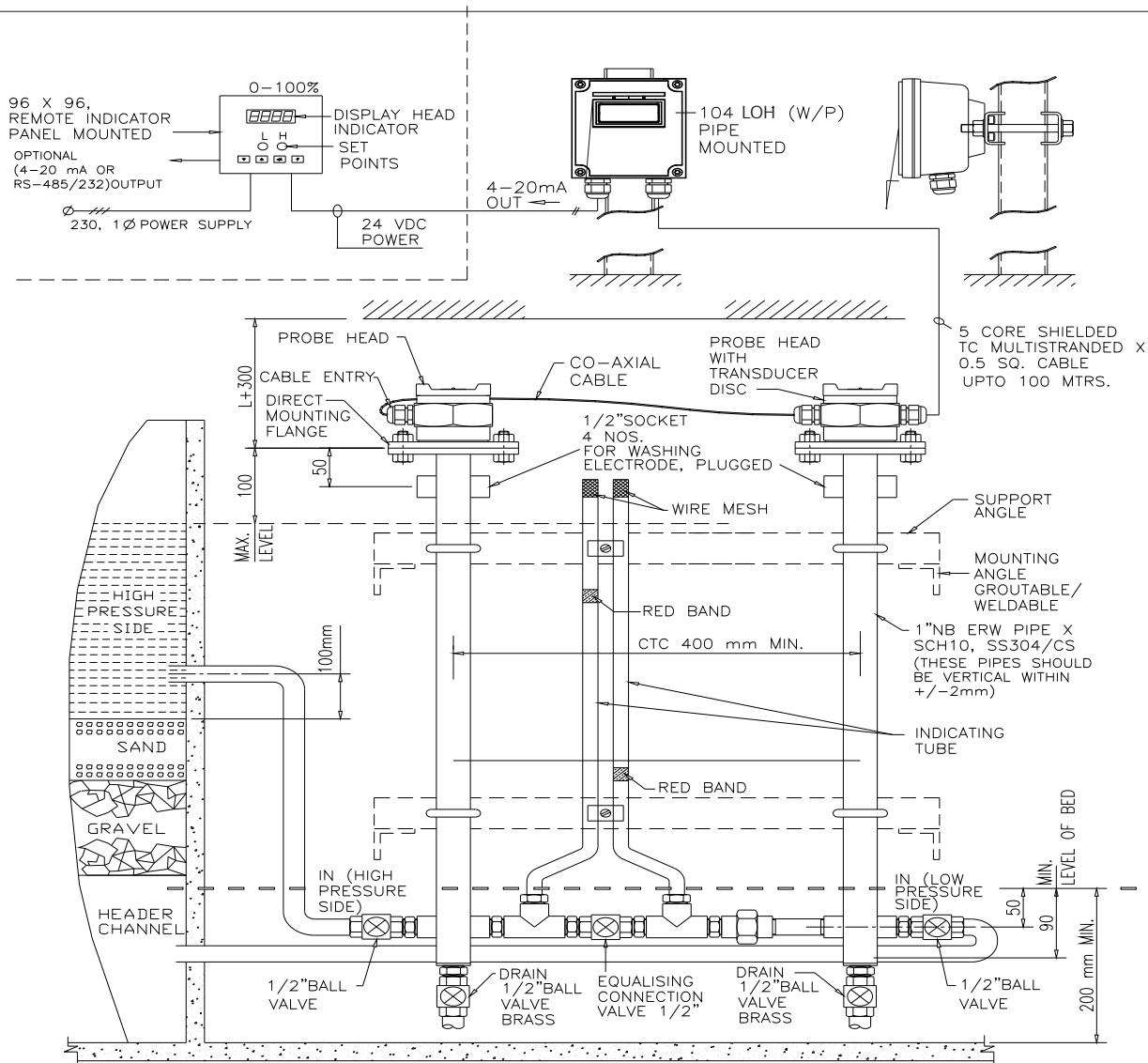
**Length:**

**1: Wall  
2: Pipe**

**4- SS 304**

**L= XXXXmm**

**APPLICATION:**



**General Arrangement for Loss of Head Indicator-Transmitter Type 104 LOH**

\*\*\* Continuous developments may necessitate changes without notice.

LF-104-0803 Rev.01 01/2008



H.O. : 39, Electronic Co-Operative Estate, Pune - 411 009 (India)

Tel. : 91-20-24220505, 24223375 Fax : 91-20-24215670

Email : sbemsales@sbem.co.in, sbemsales@vsnl.com

Web : www.sbem-india.com

Works : Bibwewadi Industrial Estate, 691/A/2, Pune-Satara Road, Pune - 411 037 (India), Email : mfg@sbem.co.in

Office : Mumbai  
Tel. : 91-22-27823601 / 03  
Fax : 91-22-2782603  
Email : sbemho@bom4.vsnl.net.in  
mumbai@sbem.co.in

Chennai  
91-44-24481235, 24486947  
91-44-24486947  
chennai@sbem.co.in

New Delhi  
91-11-26560647, 26969679  
91-11-26969679  
newdelhi@sbem.co.in

Pune & Gujarat  
91-20-24220505, 24223375  
91-20-24215670  
pune@sbem.co.in  
gujarat@sbem.co.in