



Chute Block Switch

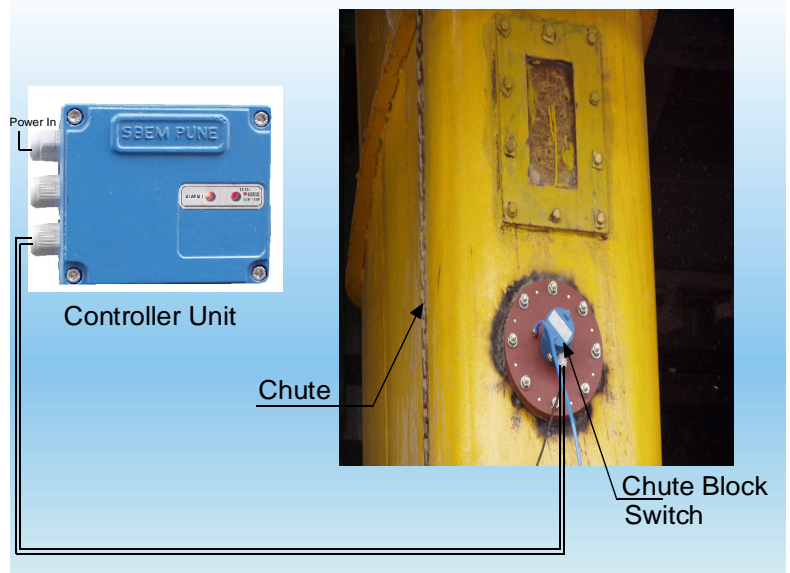
114 CBS

INTRODUCTION:

The 114 CBS is a capacitance type **Chute Block Switch** used for detecting & controlling level of bagasse in a feed chute fed to the boiler as fuel in Sugar Industries or to detect coal in the chute fed to the boiler for Power generation in Power Industries with coal fired boilers. Error indications are built in to detect sensor malfunction. This ensures that the switch is functioning properly at all times. 114 CBS consist of separate wall/pipe mounted controller unit and electrode (probe) unit mounted on the chute.

APPLICATIONS:

- Sugar Industries
- Thermal power plants (Coal fired boilers)
- Suitable for use in a chute Height Control for individual Milling units or boiler feed chutes.



ORDERING CODE:

SPECIFICATIONS:-CONTROLLER

- Power Supply: 110 VAC, 230 VAC, 24 VDC
- Input: Capacitance type sensor
- Output: 2 Nos. NO/NC, 5A @ 230VAC, potential free contacts.
- Indications: Green LED for No Blockage
Red LED for Blockage
- Time Delay: 200 msec max.
- Switching delay: Adjustable from 0.5 to 20 sec.
- Operating Temperature: 0° C to 60° C
- Relative Humidity: 0 to 95% (Non condensing)
- Terminals: Suitable for 1.5 sq.mm (Stranded) conductors (Max)
- Cable: Multi stranded copper armored cable
- Cable Entries: Three, 3/4" UNF (F)
- Enclosure: Cast Aluminum, Polyurethane painted, Weatherproof to IP 67
- Mounting For Controller: Wall or Pipe

SPECIFICATIONS:-CHUTE SENSOR

- Mounting For Sensor: Flush mounting (on chute)
- Wetted Parts: CS & SS

Model Code for Controller

114 - CBS -

<input type="checkbox"/>	<input type="checkbox"/> H	<input type="checkbox"/> 1	<input type="checkbox"/>	<input type="checkbox"/>	<input type="checkbox"/> 0	<input type="checkbox"/> 0	<input type="checkbox"/> 0
Construction	Safety	Version	Cable Entry	Power Supply			
S - Surface mounting P - Pipe mounting	H - Non Intrinsically Safe	1 - Single Point	F - 3/4" UNF (F) T - 1/2" NPT (F)	1 - 110 VAC ± 10%, 50 Hz 2 - 230 VAC ± 10%, 50 Hz 3 - 24 VDC			

Model Code for Electrode

114 - CBS -

<input type="checkbox"/> 0	<input type="checkbox"/> H	<input type="checkbox"/> 0	<input type="checkbox"/>	<input type="checkbox"/> 0	<input type="checkbox"/> 0	<input type="checkbox"/> 2	<input type="checkbox"/> 9	<input type="checkbox"/> 8	<input type="checkbox"/>
Cable Entry	Process Connection	Electrode Code		Chute Wall Thickness					
F - 3/4" UNF (F) T - 1/2" NPT (F)	02 - Flush Mounting Flange	98 - Coat Safe (Flush Type)		1 - 6 mm 2 - 8 mm 3 - 10 mm 4 - 12 mm (select Nearest)					

*Please select Separate model code for the controller and the electrode .

Example of Model Code Selection for Chute Block switch:

Model Code : 114 CBS - S H 1 T 2 00 00 0

The above Model Code specifies that the Chute Block Switch surface mounted non intrinsically safe single point version wall mounting ,operating on power supply 230VAC ,with cable entry 1/2" NPT (F).

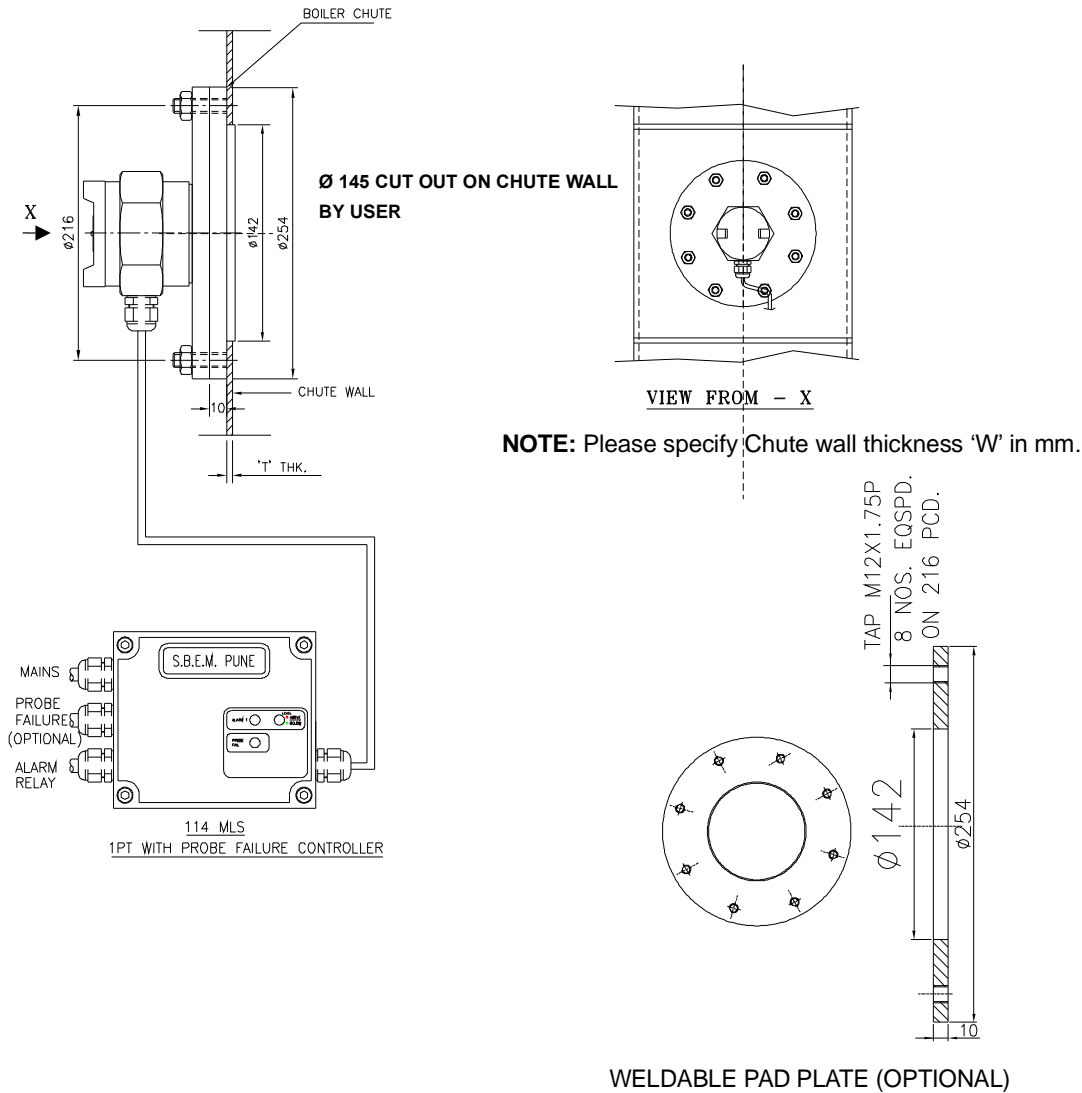
Model code for 114 CBS Electrode: 0 H 0 T 0 02 98 3

Here the electrode used is the coatsafe insulated(flush type)with cable entry 1/2" NPT (F) & chute wall thickness 10mm

Accessories:

Air purging (provision for cleaning material built upon the sensor ,Weldable Pad Plate (Optional), (The weldable pad plate supplied is to be supplied &welded to the chute wall opening.)

G.A. DRAWING - CHUTE BLOCK SWITCH FITTINGS:



* Continuous changes may necessitate changes without notice

LF-114- 0809 R02 07/2011

LF-ChuteBlockSw_114-CBS



SBEM Pvt. Ltd.

H.O. : 39, Electronic Co-Operative Estate, Pune - 411 009 (India)
 Tel. : 91-20-24220505, 24223375 Fax : 91-20-24215670
 Email : sales@sbem.co.in, ho@sbem.co.in
 Web : www.sbem-india.com



Works : Bibwewadi Industrial Estate, 691/A/2, Pune-Satara Road, Pune - 411 037 (India)

Office : Mumbai
 Tel. : 91-22-27823601 / 03
 Fax : 91-22-27823603
 Email : sbemho@bom4.vsnl.net.in
 Mumbai@sbem.co.in

Chennai
 91-44-24911235
 91-44-24416947
 chennai@sbem.co.in

New Delhi
 91-11-26560647, 26969679
 91-11-26969679
 newdelhi@sbem.co.in

Pune
 91-20-41030100
 91-20-24215670
 pune@sbem.co.in

• Our Product Range •
Level Switches: Float, Displacer, Capacitance, Conductivity, Vibration, Rotary Paddle
Level Transmitters: Pulse Radar, Guided Wave Radar, Ultrasonic, Capacitance, Hydrostatic
Tank Gauging: Servo, Float & Tape, Magnetostrictive, Float & Board
Flow Meters: Electromagnetic, Ultrasonic